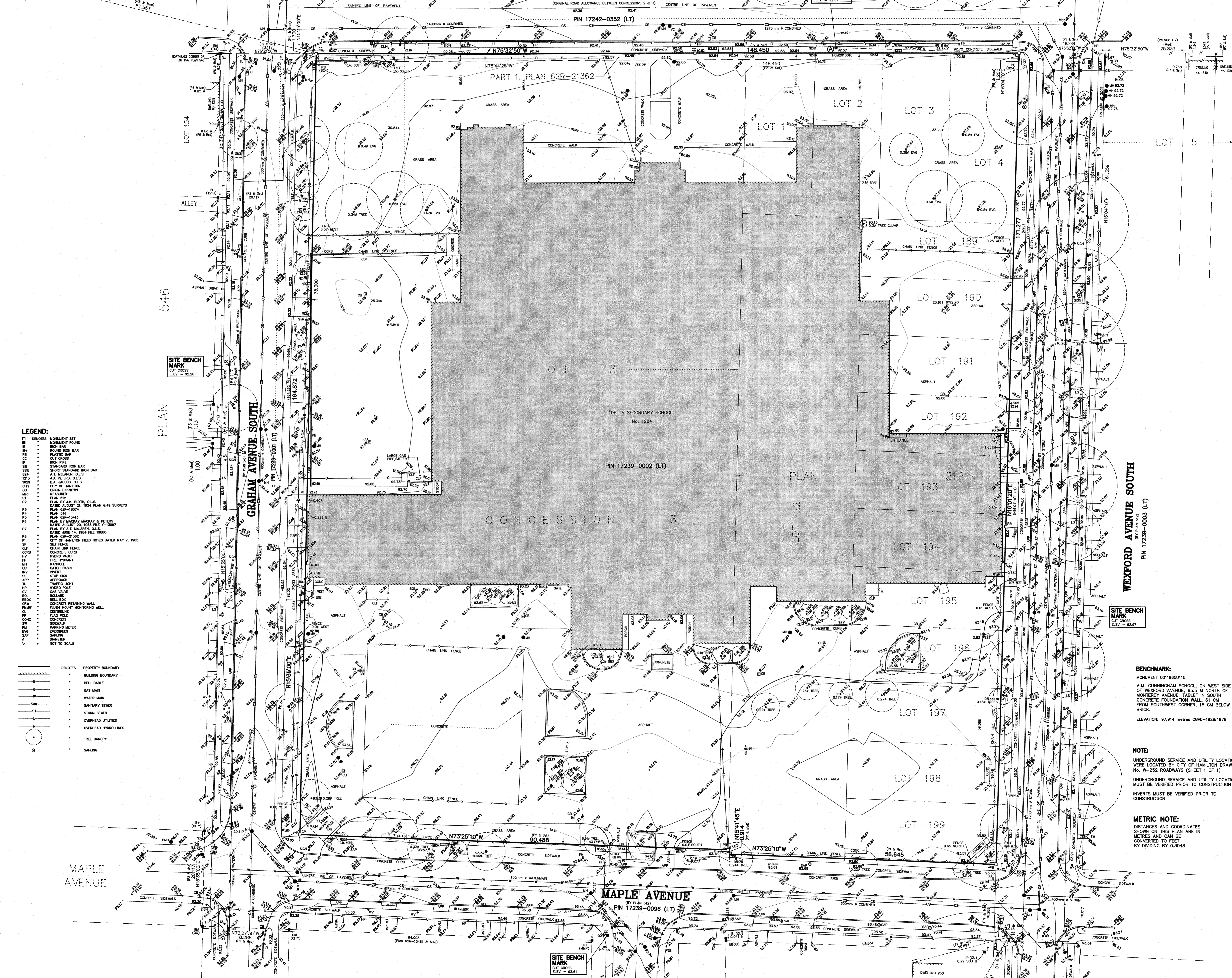
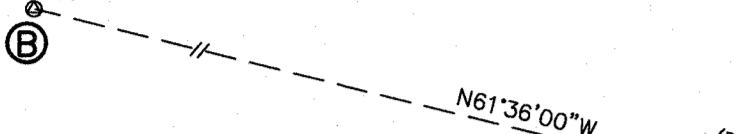


PLAN OF SURVEY
 OF PART OF
 LOTS 1, 2, 3, 4, 189 TO 199, BOTH INCLUSIVE
 AND LOT 222
 REGISTERED PLAN 512
 AND PART OF
 LOT 3
 CONCESSION 3
 GEOGRAPHIC
 TOWNSHIP OF BARTON
 IN THE
 CITY OF HAMILTON
 SCALE 1:300 METRIC
 S.D. McLAREN, O.L.S. - 2022

H04021007



- LEGEND:**
- DENOTES MONUMENT SET
 - MONUMENT FOUND
 - IRON BAR
 - ROAD SIGN BAR
 - PLASTIC BAR
 - CUT CROSS
 - IRON PIPE
 - STANDARD IRON BAR
 - SHORT STANDARD IRON BAR
 - A.T. McLAREN, O.L.S.
 - J.A. PETERS, O.L.S.
 - B.L. JOHNSON, O.L.S.
 - GRIFFIN UNKNOWN
 - MESSING
 - PLAN 512
 - PLAN BY J.A. BETH, O.L.S. DATED AUGUST 21, 1934 PLAN 049 SURVEYS
 - PLAN 62R-1874
 - PLAN 548
 - PLAN 62R-18413
 - PLAN BY MACKAY MACKAY & PETERS DATED AUGUST 20, 1983 FILE #10397
 - PLAN BY A.T. McLAREN, O.L.S. DATED JUNE 14, 1984 FILE 19880
 - PLAN 62R-21362
 - CITY OF HAMILTON FIELD NOTES DATED MAY 7, 1965
 - CITY OF HAMILTON FIELD NOTES DATED MAY 7, 1965
 - CHAIN LINK FENCE
 - CONCRETE CURB
 - HYDRO VALVE
 - FIRE HYDRANT
 - MANHOLE
 - CATCH BASIN
 - INVERT
 - STOP SIGN
 - APPROACH
 - TRAFFIC LIGHT
 - HYDRO POLE
 - GAS VALVE
 - BOLLARD
 - CONCRETE RETAINING WALL
 - FLUSH MOUNT MONITORING WELL
 - CENTRELINE
 - CONCRETE
 - SEWER
 - FIBRE OPTIC
 - EMERGENCY
 - S.A.P.
 - DIAMETER
 - NOT TO SCALE

- LEGEND:**
- PROPERTY BOUNDARY
 - BUILDING BOUNDARY
 - BELL CABLE
 - GAS MAIN
 - WATER MAIN
 - SANITARY SEWER
 - STORM SEWER
 - OVERHEAD UTILITIES
 - OVERHEAD HYDRO LINES
 - TREE CANOPY
 - SAPLING

INTEGRATION DATA

POINT ID	NORTHING	EASTING
SCP (H42016016) (A)	4788269.253	596332.715
SCP (H42016017) (B)	4788337.209	596149.184

COORDINATES © ANNOT. IN THEMSELVES, BE USED TO RE-ESTABLISH CORNERS OR BOUNDARIES SHOWN ON THIS PLAN. H04RT HORIZONTAL CAP - H02016 GCS DATUM

BEARING NOTE:
 BEARINGS ARE UTM GRID, DERIVED FROM OBSERVED REFERENCE POINTS A & B BY REAL TIME NETWORK OBSERVATIONS, UTM ZONE 17, NAD83 (ORIGINAL)

NOTE:
 DISTANCES ARE GROUND AND CAN BE CONVERTED TO GRID DISTANCES BY MULTIPLYING BY THE COMBINED SCALE FACTOR OF 0.9999473

BENCHMARK:
 MONUMENT 001965/115
 A.M. CUNNINGHAM SCHOOL, ON WEST SIDE OF WEXFORD AVENUE, 65.5 M NORTH OF MONTEREY AVENUE, TABLET IN SOUTH CONCRETE FOUNDATION WALL, 61 CM FROM SOUTHWEST CORNER, 15 CM BELOW BRICK.
 ELEVATION: 97.914 metres COVD-1928:1978

NOTE:
 UNDERGROUND SERVICE AND UTILITY LOCATIONS WERE LOCATED BY CITY OF HAMILTON DRAWING No. W-252 ROADWAYS (SHEET 1 OF 1)

UNDERGROUND SERVICE AND UTILITY LOCATIONS MUST BE VERIFIED PRIOR TO CONSTRUCTION
 INVERTS MUST BE VERIFIED PRIOR TO CONSTRUCTION

METRIC NOTE:
 DISTANCES AND COORDINATES SHOWN ON THIS PLAN ARE IN METRES AND CAN BE CONVERTED TO FEET BY DIVIDING BY 0.3048

REVISIONS

No.	DESCRIPTION	DATE	DR.
1	INITIAL DRAWING	JUNE 13, 2022	JR
2	ADDITIONAL STREET TOPO	JUNE 8, 2022	JR

SURVEYOR'S CERTIFICATE:
 I CERTIFY THAT:
 1. THE SURVEY AND PLAN ARE CORRECT AND IN ACCORDANCE WITH THE SURVEYORS ACT AND THE REGULATIONS MADE UNDER THEM
 2. THE SURVEY WAS COMPLETED ON THE 16th DAY OF MARCH, 2022

APRIL 12, 2022
 S. DAN McLAREN, O.L.S.

A.T. McLaren Limited
 49 JOHN STREET SOUTH, SUITE 230
 HAMILTON, ONTARIO, L9N 2B7
 PHONE: (905) 577-8559 FAX: (905) 577-0332
 S.D. McLAREN, O.L.S. REG. NO. 1350