

GENERAL SERVICING NOTES:

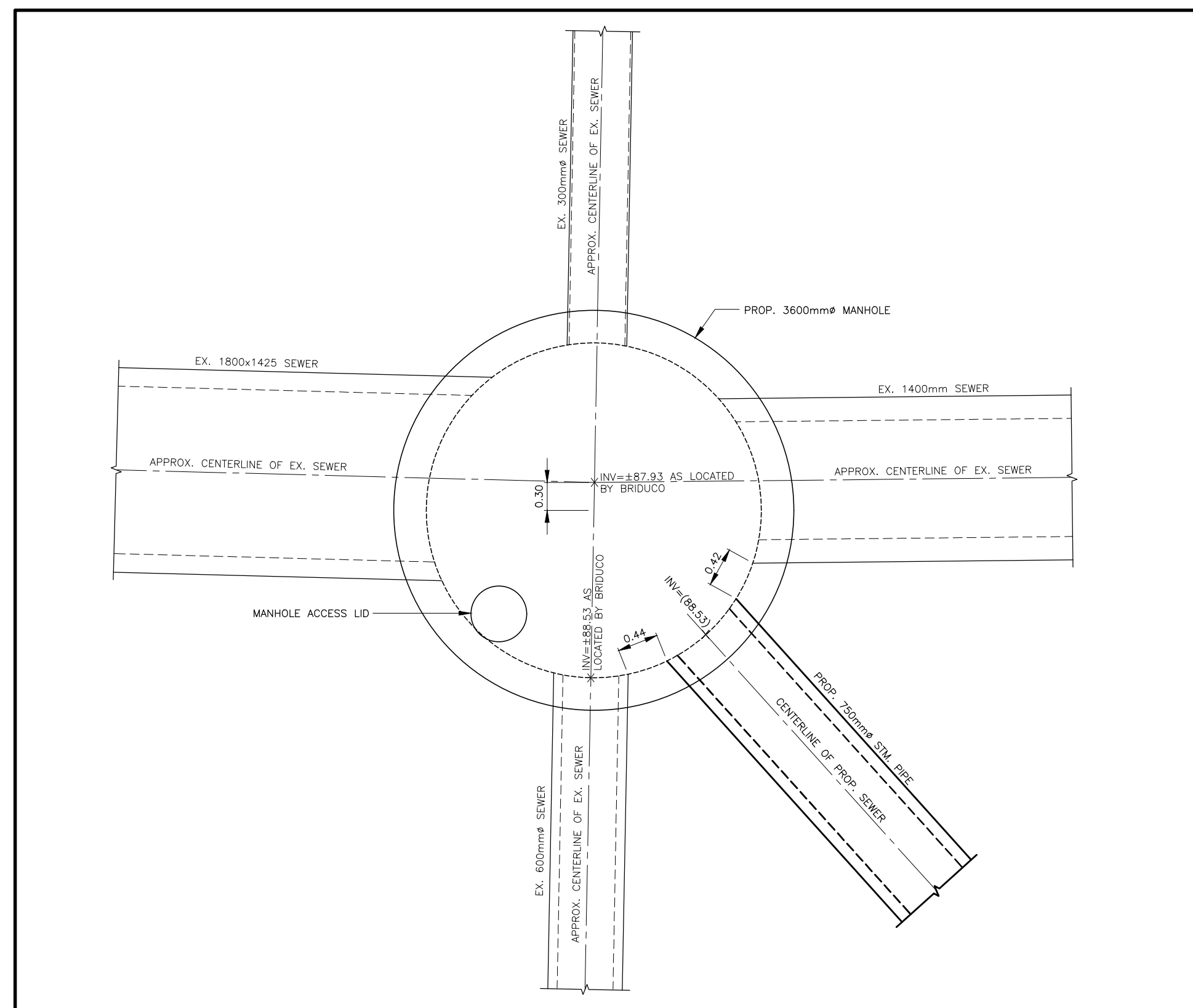
- ALL SERVICES TO BE INSTALLED AS PER CITY OF HAMILTON CONSTRUCTION AND MATERIAL SPECIFICATIONS MANUAL (LATEST EDITION) AND MINISTRY OF THE ENVIRONMENT GUIDELINES (LATEST EDITION).
- MINIMUM HORIZONTAL SEPARATION BETWEEN WATER SERVICES AND SEWERS SHALL BE 2.5m MEASURED FROM THE CLOSEST PIPE EDGE TO CLOSEST PIPE EDGE. VERTICAL SEPARATION BETWEEN WATERMANS AND SEWERS WHICH CROSS MUST BE 0.5m BETWEEN THE OUTSIDE OF THE WATERMAIN AND THE OUTSIDE OF THE SEWER, WITH THE LENGTH OF THE WATER PIPE BEING CENTRED AT THE POINT OF CROSSING SUCH THAT JOINTS IN THE WATERMAIN WILL BE EQUIDISTANT AND AS FAR AS POSSIBLE FROM THE SEWER, CROSSING PERPENDICULAR IF POSSIBLE.
- ALL WATER SERVICES TO BE INSTALLED WITH A MINIMUM OF 1.6m COVER. SEWERS TO BE INSTALLED WITH A MINIMUM COVER OF 2.20m AT THE PROPERTY LINE BELOW THE FINAL ROAD GRADE OR AT SUCH HIGHER ELEVATION ONLY AS MAY BE NECESSITATED BY THE LEVEL OF THE MAIN SEWER. ON PRIVATE PROPERTY THE MINIMUM COVER IS TO BE NO LESS THAN 1.2m.
- RESTORATION OF ROAD OVER UTILITY CUTS IN HAMILTON TO BE AS PER STANDARD DRAWINGS RD-100.01 AND RD-100.02, WITH GRANULAR "A" BEDDING.
- APPROVAL OF THIS DRAWING IS FOR MATERIAL ACCEPTABILITY AND COMPLIANCE WITH MUNICIPAL AND PROVINCIAL SPECIFICATIONS AND STANDARDS ONLY. APPROVAL AND INSPECTION BY THE CITY OF THE WORKS DOES NOT CERTIFY THE LINE AND GRADE OF THE WORKS AND IT IS THE OWNER'S RESPONSIBILITY TO HAVE THEIR ENGINEER CERTIFY THIS ACCORDINGLY.
- ALL PROPOSED SERVICE ARE TO PASS BELOW EX. WATERMANS, BY A MIN. OF 250mm, BASED ON THE TOP OF THE EX. WATERMAIN BEING 1.6m BELOW THE CENTERLINE OF ROAD.
- ALL BUILDING SERVICE SIZES ARE TO BE CONFIRMED BY THE MECHANICAL ENGINEER AT BUILDING DESIGN PHASE.

BEFORE STARTING WORK

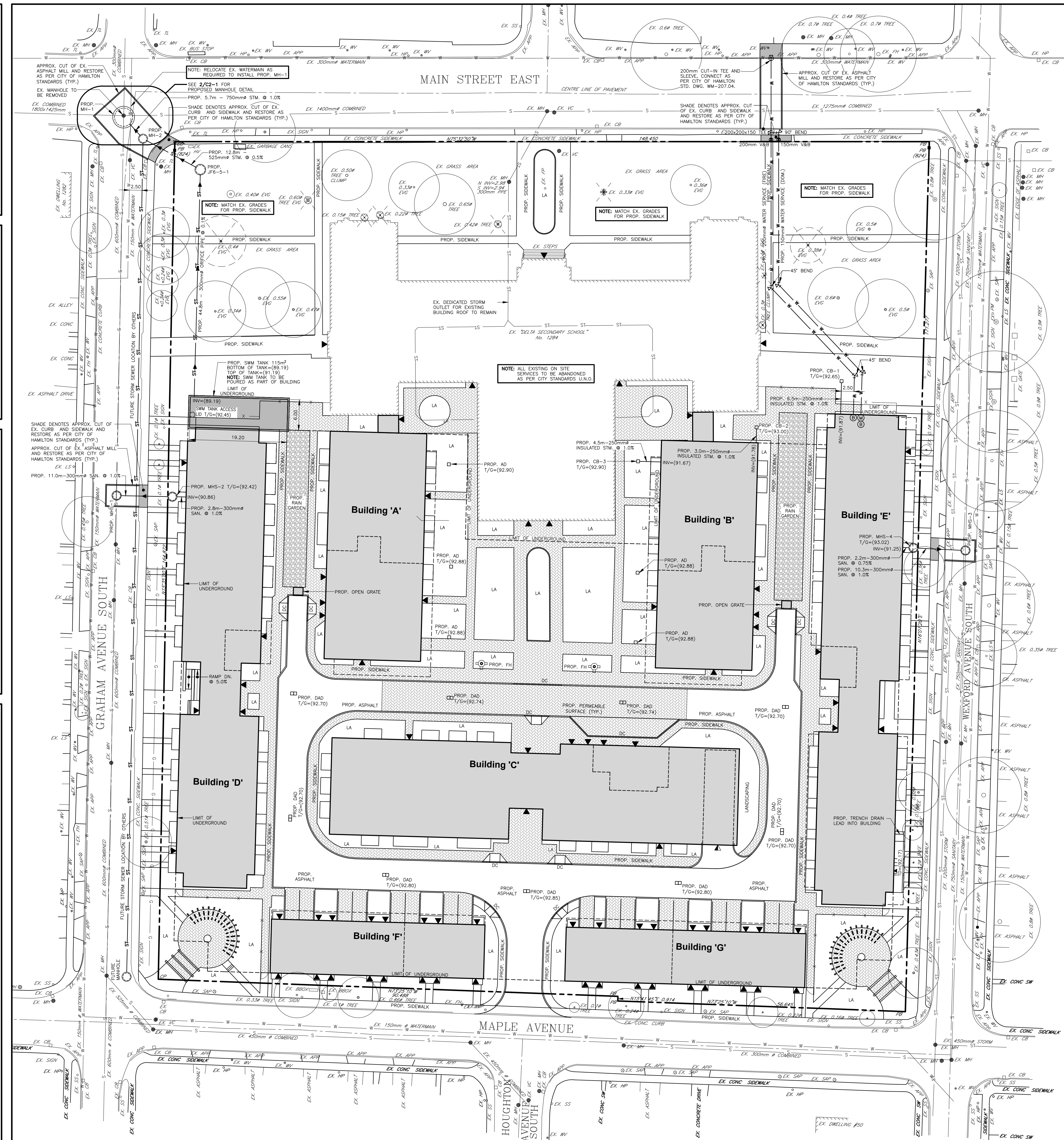
- THE CONTRACTOR SHALL NOTIFY THE CITY OF HAMILTON AND LANHACK CONSULTANTS INC. AT LEAST 48 HOURS PRIOR TO COMMENCING CONSTRUCTION.
- THE POSITION OF THE POLE LINES, CONDUITS, WATERMANS, SEWERS, AND OTHER UTILITIES AND STRUCTURES ARE NOT NECESSARILY SHOWN ON THE CONTRACT DRAWINGS, AND WHERE SHOWN, THE ACCURACY OF THE POSITION OF SUCH UTILITIES AND STRUCTURES IS NOT GUARANTEED.
- PRIOR TO THE COMMENCEMENT OF CONSTRUCTION, ALL BENCHMARKS, ELEVATIONS, DIMENSIONS, AND GRADES MUST BE CHECKED BY THE CONTRACTOR AND ANY DISCREPANCIES REPORTED TO THE ENGINEER.
- ALL EXISTING UNDERGROUND UTILITIES WITHIN THE LIMITS OF CONSTRUCTION SHALL BE LOCATED, MARKED AND PROTECTED. ANY UTILITIES DAMAGED OR DISTURBED DURING CONSTRUCTION SHALL BE REPAIRED OR REPLACED TO THE SATISFACTION OF THE ENGINEER, AT THE CONTRACTOR'S EXPENSE.
- AT LEAST TWO DIFFERENT BENCHMARKS MUST BE REFERRED TO AT ALL TIMES.

STORM STRUCTURES							
NAME	STANDARD OPSD	T/G	INVERTS			COMMENTS	
			North	South	East		
MH-1	701.015	MATCH	-	88.53	87.93	87.93	EX. INVERTS LOCATED BY BRIDUCO
MH-2	701.010	MATCH	88.59	-	-	88.84	
JF6-5-1	-	MATCH	-	89.14	88.91	-	JELLYFISH FILTER
CB-1	705.010	92.65	-	91.94	-	-	
CB-2	705.010	93.00	-	91.81	-	-	
CB-3	705.010	92.90	-	-	91.72	-	

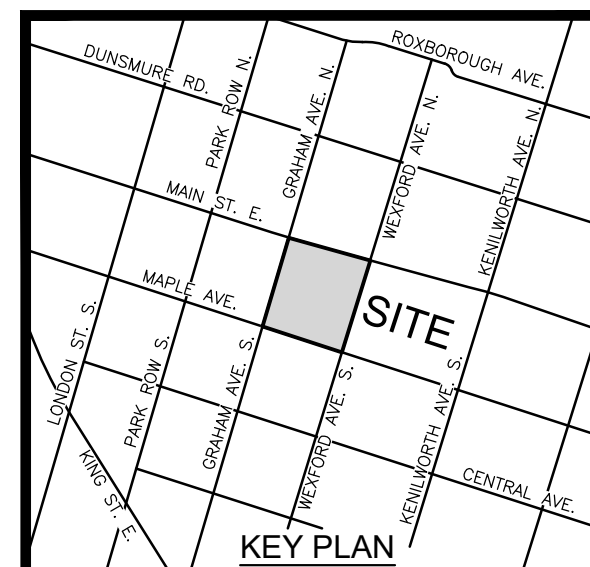
SANITARY STRUCTURES							
NAME	STANDARD OPSD	T/G	INVERTS			COMMENTS	
			North	South	East		
MHS-1	701.010	MATCH	88.90	88.90	90.12	-	FIELD VERIFY EX. SEWER INVERT
MHS-2	701.010	92.37	-	-	90.83	90.23	DROP STRUCTURE
MHS-3	701.010	MATCH	89.53	89.53	-	90.52	DROP STRUCTURE
MHS-4	701.010	93.02	-	-	90.63	91.23	



2 Proposed Manhole Detail



1 Preliminary Servicing Plan



Contractor must verify all dimensions on the Project Site and report any discrepancies before proceeding with the Work.

This drawing is a part of the Contract Documents and is to be read in conjunction with all other Contract Documents.

© COPYRIGHT - LANHACK Consultants Inc. All rights reserved.

SOURCE: EXISTING BOUNDARY SURVEY AND TOPOGRAPHICAL INFORMATION OBTAINED FROM A.T. McLEAREN LIMITED, DWG. NO. 36933, DATED APRIL 12, 2022.

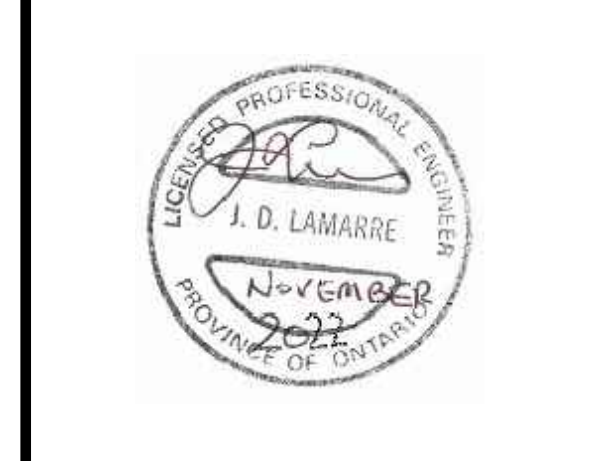
THE POSITION OF THE POLE LINES, CONDUITS, WATERMANS, SEWERS, AND OTHER UTILITIES AND STRUCTURES ARE NOT NECESSARILY SHOWN ON THE CONTRACT DRAWINGS, AND WHERE SHOWN, THE ACCURACY OF THE POSITION OF SUCH UTILITIES AND STRUCTURES IS NOT GUARANTEED.

Revision Record

No.	Description	Date (m/d/y)
A	ISSUED FOR OPA/ZBA	11/18/22

Issue Record

No.	Description	Date (m/d/y)
-----	-------------	--------------



NOT FOR CONSTRUCTION



Delta Developments Joint Venture

1284 MAIN STREET WEST
HAMILTON, ON
Date: SEPT. 2022
Drawn By: GRW
Chkd By: SMP
Scale: 1 : 400

Preliminary Servicing Plan

Project No.: 22043 Drawing No.: C2-1 Rev.: A

Plot Date: 11/18/22
M:\2022\22043 - Delta School, 1284 Main St. E. HDP\DWG\22043_C2-1 - Grading and Servicing Plan.dwg